

A full-page advertisement featuring two men in suits standing on a rocky bank next to a river. The man on the left is wearing a dark green suit with a white shirt and a colorful pocket square. The man on the right is wearing a navy blue suit with a pink shirt and a pink tie. Both are wearing brown leather shoes. The background is a blurred natural setting with a river and trees.

Oem

*in Rhythm*  
— *with Nature*

*Fine Wool Blends  
Designed for Summers*





# OCM *in Rhythm with Nature*

*With the bloom and rustle of flora  
With the sleep and wake of the stars  
With the rise and fall of the ebbing tides  
Being in rhythm with nature*

Harnessing traits from these limitless possibilities – from the gifts of nature – the mission of the OCM Summer Collection is to make nature reside in an urban milieu.

The meticulous designs are drawn from the intricate details found in nature. They are unique, structured and strike a harmonious balance between textural nuances, with a lightness experienced in the drape.

The expanse of nature truly fulfils us – water, minerals, rock, trees, earth and wind. Key colours to look out for are - earth browns, emerald greens, russet reds, placid blues, soft limes and mineral greys.

## EXPERIENCE

- » *fabrics that have momentum*
- » *vibrancy stemming from natural colour tones*
- » *the serene yet powerful*
- » *the sustainability of the earth*

Inspired from the vitality of nature, bring home the warmth of the OCM Summer Collection.



# Freesia

*Fabrics that recount the elements of nature.  
Exuding lightness, brightness and optimism,  
this range **Breathes Summer.***



Oem *in Rhythm*  
*with Nature*







NAT2001305/2



NAT2001305/1



NAT2001305/3



*Hinting at being retro, yet at the same time modern, this deep **green** is a cooler, cleaner take on green. Wear a new direction.*







NAT2001105/2



NAT2001105/3



NAT2001105/4

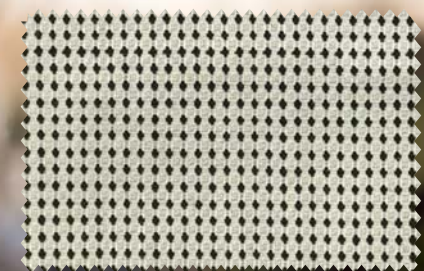


NAT2001105/1





NAT2001304/2



NAT2001304/1

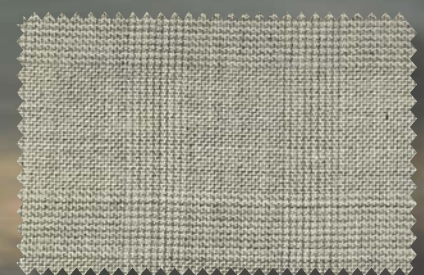


*Oem* in Rhythm  
— with Nature

NAT2001003/3



NAT2001003/1



NAT2001003/2



*A bold and lively colour! Wear your confidence  
with this outgoing bright **yellow** shade. Glisten  
with joy and illuminate the world around us.*





NAT2001201/1



NAT2001201/4



NAT2001201/5



NAT2001201/6

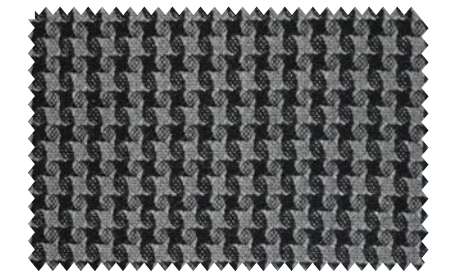
NAT2001201/2







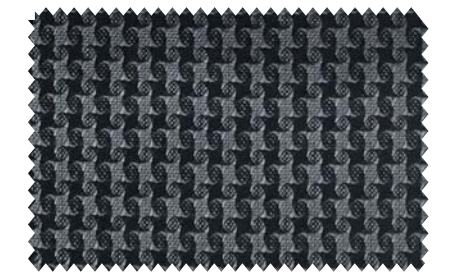
NAT2001303/3



NAT2001303/1



NAT2001303/2



NAT2001303/4



*This blue holds the expectation of the clear blue sky. It is suggestive of expansiveness and continuity. Wear your optimism. This shade reassures us with its promise of a new day.*

NAT2001005/2



NAT2001005/1



NAT2001005/3



NAT2001005/4

Oem in Rhythm with Nature







NAT2001404/2



NAT2001404/5

*This rich, royalty inspired  
**burgundy** adds to  
your strength and stature.  
Wear your substance.*

NAT2001404/1





# Ocm

in Rhythm  
with Nature







NAT2001102/2



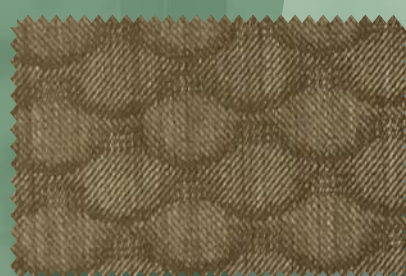
NAT2001102/3



NAT2001102/4







NAT2001502/1



NAT2001502/3



NAT2001502/4



NAT2001502/2



*Seasoned yet sans season. This is an earthy brown-based **red** that adds flavorful definition to the summer palette. Wear your composure.*



NAT2001401/1



NAT2001401/3



NAT2001401/4



NAT2001401/5

*Oem* in Rhythm  
with Nature



NAT2001401/2





NAT2001101/1



NAT2001101/2



NAT2001101/3



NAT2001101/4



NAT2001101/5





# Bling

*Fabrics that are reminiscent of a distant fantasy.  
Reflecting intricacy, finesse and suppleness,  
this range **Feels Like Summer.***



Conveying originality and ingenuity, the magical  
*purple* is a distinctive and complex shade.  
Wear your intrigue and fascinate the world.







NG654219/1



NG654219/2



NG654219/3



NG654219/4



NG654219/5



NG654219/6



NG654219/7



NG654219/8



NG654219/10

NG654219/11







NG654265/2



NG654265/3



NG654265/4



NG654265/6



NG654265/7



NG654265/1

*Brimming with the  
warmth of sand,  
this colour is a  
comforting neutral  
shade that effortlessly  
connects the seasons.*





NG654255/2



NG654255/3



NG654255/1





NG654265/1



NG654265/2



NG654265/4



NG654265/6



NG654265/7



NG654265/3



# Ocm

in Rhythm  
with Nature







NG654255/2



NG654255/1



NG654255/3



NG654254/1



NG654254/2



NG654254/3





NG654239/1



NG654239/3



NG654239/4



NG654239/5



NG654239/6



NG654239/7



NG654239/2





NG654219/1



NG654219/2



NG654219/4



NG654219/5



NG654219/6



NG654219/7



NG654219/8

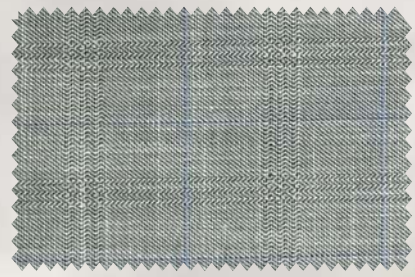


NG654219/10

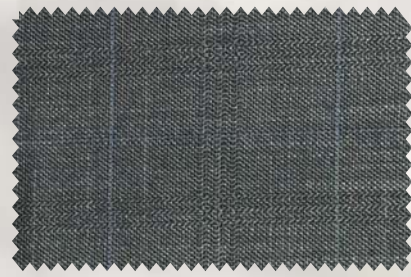


NG654219/11





NG654256/1



NG654256/2



NG654256/3





NG654239/5



NG654239/1



NG654239/2



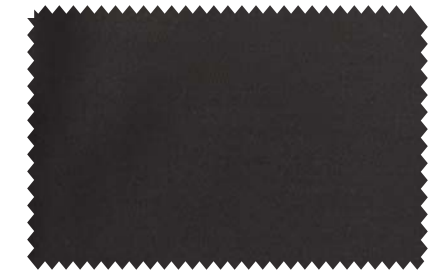
NG654239/3



NG654239/4



NG654239/6



NG654239/7



# Beau Mode

*Fabrics that are committed to intricate contours.  
Symbolizing delicate textures and mottled  
colours, this range **Speaks Summer.***





Ocean  
in Rhythm  
—with Nature





BON4242009/4



BON4242009/1



BON4242009/2



BON4242009/3



BON4242009/5



BON4242009/6



*A mid-tone dove grey ; is an essential  
colour for the summer palette.*



BON4242003/2



BON4242003/3



BON4242003/5



BON4242003/6



BON4242003/7



BON4242003/8



BON4242003/1





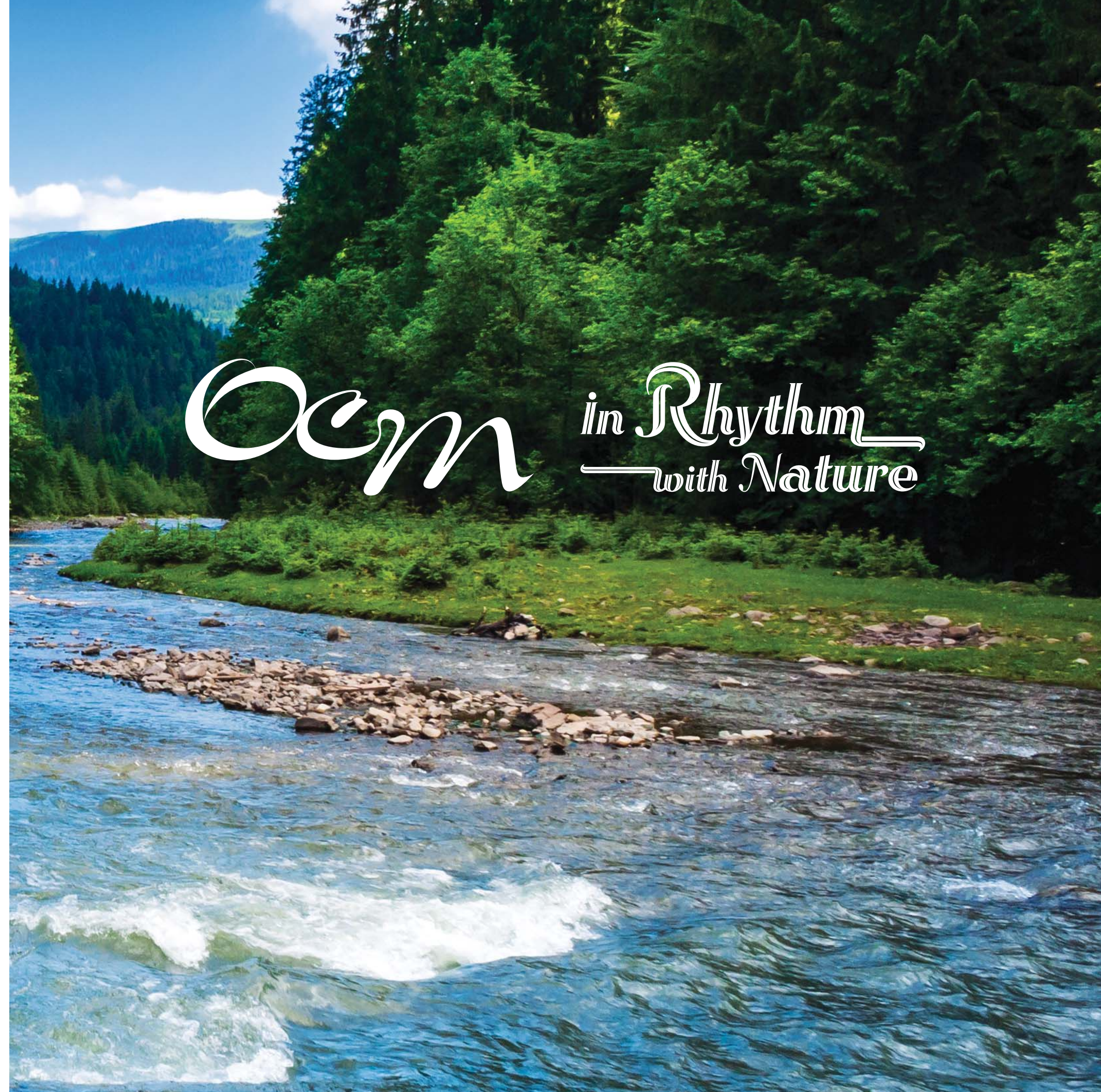
BON4242007/2



BON4242007/1



BON4242007/3



*Oem* *in Rhythm*  
*— with Nature*



*Ocm* Private Limited

*OCM* Estate, GT Road, Chheharta, Amritsar - 143105, Ph +91-183-2820600

[www.ocm.in](http://www.ocm.in) | [info@ocm.in](mailto:info@ocm.in)

